

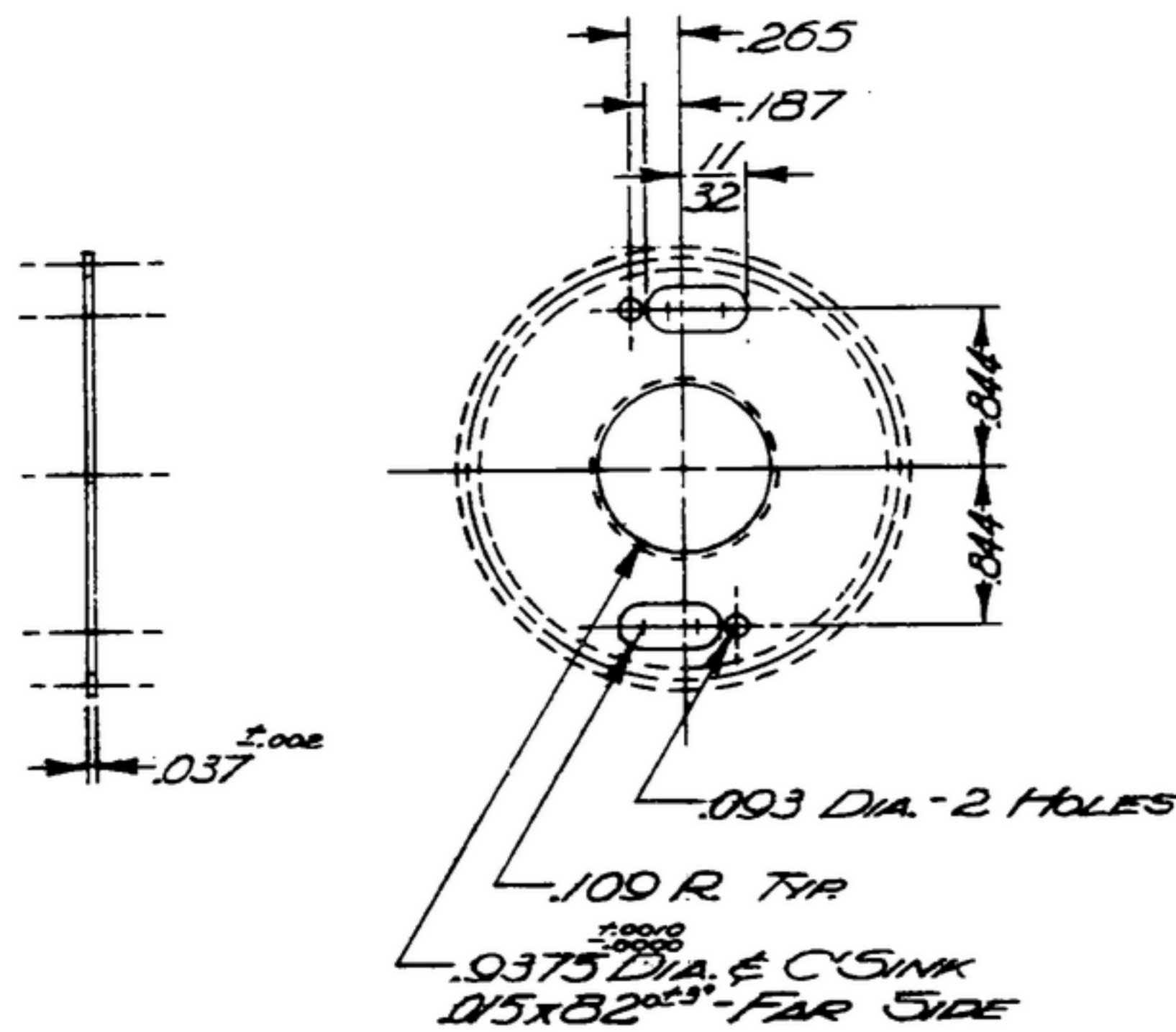
FD-6

506-9327-002-R-391

NOTICE: WHEN GOVERNMENT DRAWINGS, SPECIFICATIONS, OR OTHER DATA ARE USED FOR ANY PURPOSE OTHER THAN IN CONNECTION WITH A DEFINITELY RELATED GOVERNMENT PROCUREMENT OPERATION, THE UNITED STATES GOVERNMENT THEREBY INCURS NO RESPONSIBILITY FOR ANY OMISSION, MISSTATEMENT, OR THE FACT THAT THE GOVERNMENT MAY HAVE FORMULATED, FURNISHED, OR IN ANY WAY SUPPLIED THE SAID DRAWINGS, SPECIFICATIONS, OR OTHER DATA IS NOT TO BE REGARDED BY IMPLICATION OR OTHERWISE AS IN ANY MANNER LICENSING THE HOLDER OR ANY OTHER PERSON OR CORPORATION, OR CONVEYING ANY RIGHTS OR PERMISSION TO MANUFACTURE, USE, OR SELL ANY PATENTED INVENTION THAT MAY IN ANY WAY BE RELATED THERETO.

NOTE:
*FOR INFORMATION ONLY,
CONTRACTOR MAY AT HIS
OPTION DEVIATE FROM
THESE PROCESS DETAILS

* SW APPROVAL		REVISIONS			
SYM	PR10042/2	SYM	DESCRIPTION	DATE	APPROVAL
		A ₄	A ₁ -RENUMBERED NOTES; A ₂ -ADDED APPL. SM-D-248975, SM-D-343600, SC-DL-248775, A ₃ -COMP. 302 WAS COMP. G. A ₄ -FINISH WAS PER MIL-P-12011	1 OCT 59	42428-PC- -59-AI-51 REV'D. PME
		B ₁	B ₁ - IN NOTE 1 301 WAS 302	APRIL 60	42428-PC-59 REV'D PME



NOTES: (A₃) (B₁)

- 1.-STEEL, COMP 301 COND 1/4 H, PER SPEC MIL-S-5059
- 2.-NORMAL DIAMETRAL PITCH 18
NORMAL PRESSURE ANGLE 14 1/2°
NUMBER OF TEETH 18
THEORETICAL PITCH DIAMETER 2.250
BACKLASH .0015 TO .0025 WHEN REFERRED TO THE THEORETICAL PITCH CIRCLE
TOTAL COMPOSITE ERROR NOT TO EXCEED .003 WHEN MEASURED WITH MASTER GEAR
AMERICAN STANDARD INVOLUTE TOOTH FORM
ALL TERMS USED AS DEFINED BY AGMA STANDARDS
- 3.-ALL DIMENSIONS FOR SLOTS & .093 DIA HOLES ARE TYPICAL
- 4.-PART MUST BE FLAT WITHIN .004 TIR
- 5.-REMOVE ALL BURRS AND SHARP EDGES.
- 6.-FINISH: E 300 PER SPEC. MIL-F-14072.

QTY	PART NO.	DESCRIPTION	DATE	DATE SPEC
LIST OF MATERIAL				

UNLESS OTHERWISE SPECIFIED		AUTHENTICATION		GEAR	SIGNAL CORPS ENGINEERING LABORATORIES PORT MONMOUTH NEW JERSEY
DIMENSIONS ARE IN INCHES TOLERANCES ON FRACTIONS DECIMALS ANGLES		DRAWN	TRACED		
(A ₂) SM-D-248975	±.005	21852-PN- 58-93	Photo		
SM-D-343600 SC-DL-248775	±.005		Checked		
SM-B-178977			Verified		
SM-B-178929 SC-DL-178467			Approved		
NEXT ASSY	USED ON		Reviewed		
APPLICATION			DATE	SCALE	
			27-OCT-53	1/1	SEE NOTE 5

SM-C-178930